



---

---

---

---

---

---

---

---



---

---

---

---

---

---

---

---



---

---

---

---

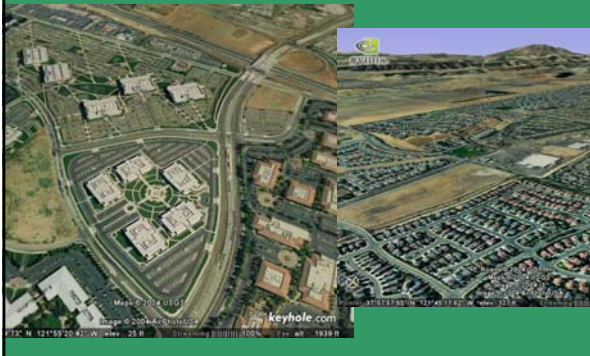
---

---

---

---

## Planning to Drive



---

---

---

---

---

---

---

---



---

---

---

---

---

---

---

---

## Self-fulfilling prophecy of sprawl



---

---

---

---

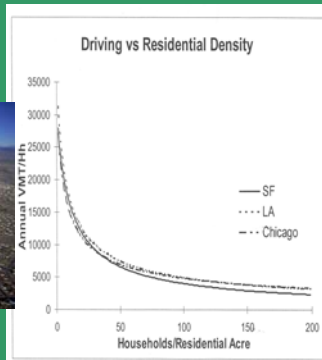
---

---

---

---

## Less Density = More Driving



---

---

---

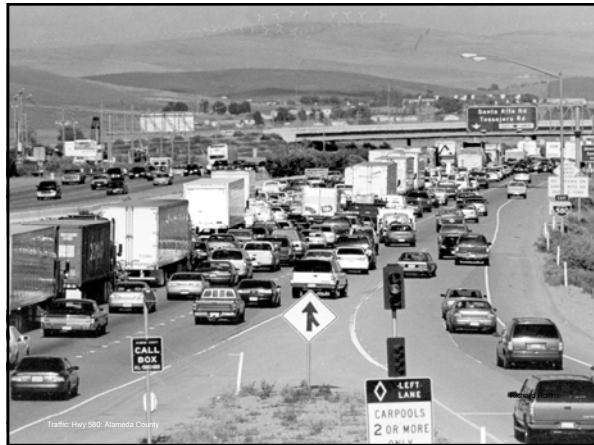
---

---

---

---

---



---

---

---

---

---

---

---

---



Compared to 1969 Americans drive:

- 88% farther to shop
- 137% farther for errands

---

---

---

---

---

---

---

---

### Impact on Health



### Chronic Illness & Injury:

- Asthma & respiratory illnesses
- Heart disease
- Obesity
- Diabetes
- Mental health problems
- Traffic/Pedestrian injuries

### Other Challenges:

- Access to Healthcare
- Combined cost of housing and transportation

---

---

---

---

---

---

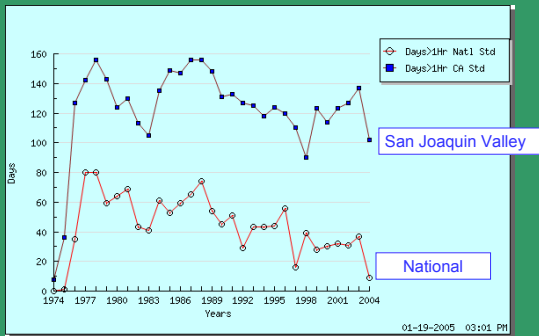
---

---

---

---

### Number of Days Ozone Level Exceeds Daily Maximum



Air Resources Board, California Air Quality Trend Summaries

---

---

---

---

---

---

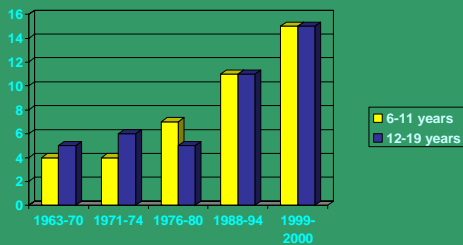
---

---

---

---

### Prevalence (%) of overweight among children and adolescents



---

---

---

---

---

---

---

---

---

---




---

---

---

---

---

---

---

---

### Cost of Overweight, Obesity & Physical Inactivity California, 2000

	<u>Billions</u>
Health Care	\$10.172
Lost Productivity	\$11.168
<u>Workers Comp.</u>	<u>\$ .338</u>
<b>Total</b>	<b>\$21.678</b>

Source: CDHS. Unpublished report. 2004

---

---

---

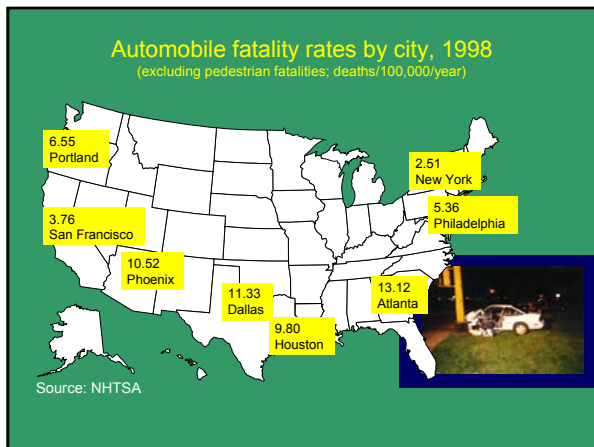
---

---

---

---

---




---

---

---

---

---

---

---

---



E. 14<sup>th</sup> Street and Davis Street

**TODAY**



---

---

---

---

---

---

---

---

E. 14<sup>th</sup> Street and Davis Street

**5 YEARS**



---

---

---

---

---

---

---

---

E. 14<sup>th</sup> Street and Davis Street

**7 YEARS**



---

---

---

---

---

---

---

---

E. 14<sup>th</sup> Street and Davis Street

12 YEARS



---

---

---

---

---

---

---

---



"Walking  
School Bus"

---

---

---

---

---

---

---

---

## Projects and Policies

- Safe Routes to School
- Complete Streets
- Bike Master Plans
- Smart transit, including Bus Rapid Transit
- High Speed Rail?
- Transit Oriented Development for All
- Smarter/less Parking
- Blueprints that bring it together

---

---

---

---

---

---

---

---

**LEADERSHIP & THE ENVIRONMENT** **Reduces GHG Emissions**

**Newsweek**

**Save the Planet—Or Else**

BARACK OBAMA

Residential 6%  
Commercial 3%  
Electricity Generation (In-State) 12%  
Electricity Generation (Imports) 13%  
Agriculture 6%  
Industrial 20%  
Transportation 38%

---

---

---

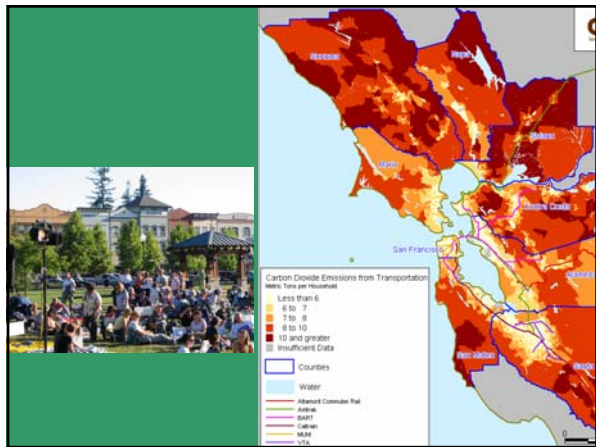
---

---

---

---

---




---

---

---

---

---

---

---

---

**SB 375**

#1: CARB set GHG targets by region

#2: Develop Sustainable Communities Strategy

#3: Plan for Housing

#4: CEQA Relief

**Metropolitan Planning Organizations (MPOs) and Regional Transportation Planning Agencies (RTPAs)**

---

---

---

---

---

---

---

---

## Health Message Can Lead The Way



---

---

---

---

---

---

---

---

## Recent Public Health Wins

- Strong health/equity coalitions at many levels
- Lead messengers on AB 32
- Successful health advocacy for strong regional targets
- Health In All Policies (Strategic Growth Council)

---

---

---

---

---

---

---

---

## Performance-Based Approach MTC Targets and Measures

- Reduce Premature Deaths from Particulate –
  - Deaths from PM 2.5 by 10%, Course particulate by 20%
- Reduce by 50% the number of injuries and fatalities from all collision (incl. bike/ped)
- Increase average daily time walking and biking per person, for transportation, by 60%
- Decrease by 10% share of low-income income going to transportation and housing

---

---

---

---

---

---

---

---

## What will it take to win?

- ▼ Funding for transit, affordable housing, planning
- ▼ Supportive state and federal policies
- ▼ General plans and zoning that are innovative, inclusive
- ▼ Complete streets, Safe Routes to Schools, smart parking and other win-win policies
- ▼ Powerful Sustainable Communities Strategies

---

---

---

---

---

---

---

---